



# Evans Distribution Systems

*It's easier with Evans.*



**PROGRESSIVE DISTRIBUTION CENTERS**  
**18765 SEAWAY DRIVE**  
**MELVINDALE, MI 48211**

**1.313.388.3200**  
**1-800-OK-EVANS**  
**SALES@EVANSDIST.COM**  
**WWW.EVANSDIST.COM**

## SERVICES

- FULFILLMENT & DISTRIBUTION
- SEQUENCING
- CROSSDOCKING
- FOREIGN TRADE ZONE
- US CUSTOMS BONDED
- RAIL ACCESS - CSX & NS
- HAZMAT
- SAME DAY OR JIT
- TRUCKLOAD & LTL
- INTERMODAL
- EXPEDITES
- SWITCHING & YARD MANAGEMENT
- STRAIGHT TRUCKS & SMALL TRUCKS
- PORT & RAIL DRAYAGE
- OCEAN FREIGHT
- QUALITY INSPECTION
- TESTING & CONTAINMENT
- REWORK
- CONTRACT PACKAGING
- CO-PACKING
- LIGHT ASSEMBLY
- SHRINKWRAPPING
- KITTING AND BAGGING
- LABELING
- DISPLAY BUILDING
- STAFFING SERVICES

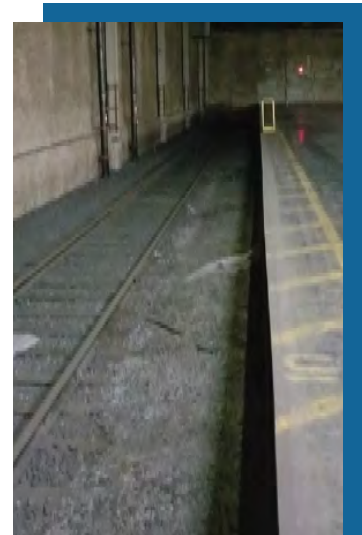
## RAIL-SERVED WAREHOUSING

Moving freight long distances via rail can be a very economical and efficient form of transportation, especially for heavier freight. Evans Distribution Systems operates (3) rail-served warehouse facilities in Michigan with direct rail access from both Norfolk Southern & CSX. Freight from inbound railcars can be transloaded into containers for overseas shipping, onto trucks for domestic delivery, or stored in our warehouse. Also, rail-served warehouses are more cost effective since you will only pay rail fees, and no additional drayage costs.

If you need to ship your freight via rail, but are not rail-served at your own facility, we can consolidate truckload shipments at one of our facilities and then ship outbound via our rail-served warehouse.

The following facilities are rail-served:

1. Progressive Distribution Centers  
6307 West Fort Street.  
Detroit, MI 48209  
NS Rail
2. Progressive Distribution Centers  
12900 South Huron River Dr.  
Romulus, MI 48174  
CSX Rail - 16 Rail Cars
3. Progressive Distribution Centers  
18765 Seaway Drive  
Melvindale, MI 48122  
CSX & NS Rail
4. Progressive Distribution Centers  
2500 Enterprise Drive  
Allen Park, MI 48101  
Union Pacific Railroad



**WWW.EVANSDIST.COM**

**1-800-OK-EVANS**

**IT'S EASIER WITH EVANS**